

## FELTON OXIJET™

THE OXIJET™ IS IDEAL FOR HOMES WITH MAINS (EQUAL HIGH) WATER PRESSURE.

The Oxijet™ works by jetting the water through 4 tiny nozzles, and sucking air into the stem of the shower rose. The air volumises and pressurises the water, creating tiny air bubbles within the water stream that burst when they touch your skin. In many mains pressure situations the Oxijet™ will pay for itself in water and energy savings, and help you do your part to preserve our beautiful planet.



PINK  
TO FIT A FEMALE  
FIXED ROSE  
TP0115



WaterMark  
AS 5200.037.2.  
WMK25712



Water Consumption  
**8.5**  
litres per minute  
Mains Pressure  
[www.waterefficiency.govt.nz](http://www.waterefficiency.govt.nz)



10  
YEARS  
WARRANTY



EQUAL  
HIGH  
(MAINS)  
PRESSURE  
MP

## FELTON OXIJET™

THE OXIJET™ IS IDEAL FOR HOMES WITH MAINS (EQUAL HIGH) WATER PRESSURE.

The Oxijet™ works by jetting the water through 4 tiny nozzles, and sucking air into the stem of the shower rose. The air volumises and pressurises the water, creating tiny air bubbles within the water stream that burst when they touch your skin. In many mains pressure situations the Oxijet™ will pay for itself in water and energy savings, and help you do your part to preserve our beautiful planet.



PINK  
TO FIT A FEMALE  
FIXED ROSE  
TP0115



WaterMark  
AS 5200.037.2.  
WMK25712



Water Consumption  
**8.5**  
litres per minute  
Mains Pressure  
[www.waterefficiency.govt.nz](http://www.waterefficiency.govt.nz)



10  
YEARS  
WARRANTY



EQUAL  
HIGH  
(MAINS)  
PRESSURE  
MP

## FELTON OXIJET™

THE OXIJET™ IS IDEAL FOR HOMES WITH MAINS (EQUAL HIGH) WATER PRESSURE.

The Oxijet™ works by jetting the water through 4 tiny nozzles, and sucking air into the stem of the shower rose. The air volumises and pressurises the water, creating tiny air bubbles within the water stream that burst when they touch your skin. In many mains pressure situations the Oxijet™ will pay for itself in water and energy savings, and help you do your part to preserve our beautiful planet.



PINK  
TO FIT A FEMALE  
FIXED ROSE  
TP0115



WaterMark  
AS 5200.037.2.  
WMK25712



Water Consumption  
**8.5**  
litres per minute  
Mains Pressure  
[www.waterefficiency.govt.nz](http://www.waterefficiency.govt.nz)



10  
YEARS  
WARRANTY



EQUAL  
HIGH  
(MAINS)  
PRESSURE  
MP

## FELTON OXIJET™

THE OXIJET™ IS IDEAL FOR HOMES WITH MAINS (EQUAL HIGH) WATER PRESSURE.

The Oxijet™ works by jetting the water through 4 tiny nozzles, and sucking air into the stem of the shower rose. The air volumises and pressurises the water, creating tiny air bubbles within the water stream that burst when they touch your skin. In many mains pressure situations the Oxijet™ will pay for itself in water and energy savings, and help you do your part to preserve our beautiful planet.



PINK  
TO FIT A FEMALE  
FIXED ROSE  
TP0115



WaterMark  
AS 5200.037.2.  
WMK25712



Water Consumption  
**8.5**  
litres per minute  
Mains Pressure  
[www.waterefficiency.govt.nz](http://www.waterefficiency.govt.nz)



10  
YEARS  
WARRANTY



EQUAL  
HIGH  
(MAINS)  
PRESSURE  
MP

## FELTON OXIJET™

THE OXIJET™ IS IDEAL FOR HOMES WITH MAINS (EQUAL HIGH) WATER PRESSURE.

The Oxijet™ works by jetting the water through 4 tiny nozzles, and sucking air into the stem of the shower rose. The air volumises and pressurises the water, creating tiny air bubbles within the water stream that burst when they touch your skin. In many mains pressure situations the Oxijet™ will pay for itself in water and energy savings, and help you do your part to preserve our beautiful planet.



PINK  
TO FIT A FEMALE  
FIXED ROSE  
TP0115



WaterMark  
AS 5200.037.2.  
WMK25712



Water Consumption  
**8.5**  
litres per minute  
Mains Pressure  
[www.waterefficiency.govt.nz](http://www.waterefficiency.govt.nz)



10  
YEARS  
WARRANTY



EQUAL  
HIGH  
(MAINS)  
PRESSURE  
MP

## FELTON OXIJET™

THE OXIJET™ IS IDEAL FOR HOMES WITH MAINS (EQUAL HIGH) WATER PRESSURE.

The Oxijet™ works by jetting the water through 4 tiny nozzles, and sucking air into the stem of the shower rose. The air volumises and pressurises the water, creating tiny air bubbles within the water stream that burst when they touch your skin. In many mains pressure situations the Oxijet™ will pay for itself in water and energy savings, and help you do your part to preserve our beautiful planet.



PINK  
TO FIT A FEMALE  
FIXED ROSE  
TP0115



WaterMark  
AS 5200.037.2.  
WMK25712



Water Consumption  
**8.5**  
litres per minute  
Mains Pressure  
[www.waterefficiency.govt.nz](http://www.waterefficiency.govt.nz)



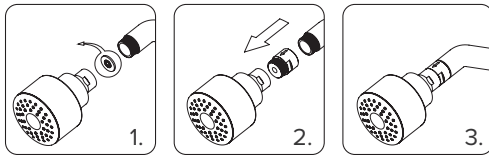
10  
YEARS  
WARRANTY



EQUAL  
HIGH  
(MAINS)  
PRESSURE  
MP

**OxIJET™ FOR FEMALE FIXED ROSE**  
 TP0115 0800 743 358 | www.oxijet.com

**INSTRUCTIONS**



- 1. Remove any existing flow restrictor
- 2. Install the Oxijet™ and ensure seal is attached between fittings
- 3. Ready to use

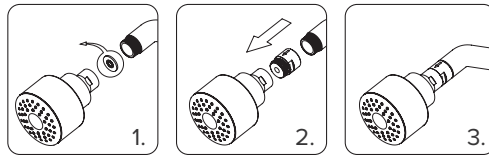
Note: The Oxijet™ is optimised for Felton fixed shower roses. Only use with non-restrictive (all pressures) fixed roses. Compatible with DN15 (1/2") threads and may not be compatible with some fixed roses.

OPERATING PRESSURE  
 Minimum 300 kPa  
 Maximum 1000 kPa  
 OPERATING TEMPERATURE  
 Maximum 80 °C



**OxIJET™ FOR FEMALE FIXED ROSE**  
 TP0115 0800 743 358 | www.oxijet.com

**INSTRUCTIONS**



- 1. Remove any existing flow restrictor
- 2. Install the Oxijet™ and ensure seal is attached between fittings
- 3. Ready to use

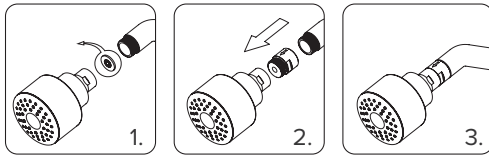
Note: The Oxijet™ is optimised for Felton fixed shower roses. Only use with non-restrictive (all pressures) fixed roses. Compatible with DN15 (1/2") threads and may not be compatible with some fixed roses.

OPERATING PRESSURE  
 Minimum 300 kPa  
 Maximum 1000 kPa  
 OPERATING TEMPERATURE  
 Maximum 80 °C



**OxIJET™ FOR FEMALE FIXED ROSE**  
 TP0115 0800 743 358 | www.oxijet.com

**INSTRUCTIONS**



- 1. Remove any existing flow restrictor
- 2. Install the Oxijet™ and ensure seal is attached between fittings
- 3. Ready to use

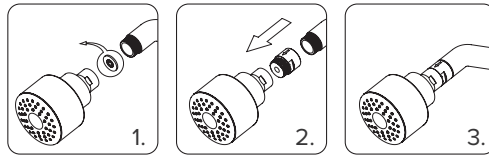
Note: The Oxijet™ is optimised for Felton fixed shower roses. Only use with non-restrictive (all pressures) fixed roses. Compatible with DN15 (1/2") threads and may not be compatible with some fixed roses.

OPERATING PRESSURE  
 Minimum 300 kPa  
 Maximum 1000 kPa  
 OPERATING TEMPERATURE  
 Maximum 80 °C



**OxIJET™ FOR FEMALE FIXED ROSE**  
 TP0115 0800 743 358 | www.oxijet.com

**INSTRUCTIONS**



- 1. Remove any existing flow restrictor
- 2. Install the Oxijet™ and ensure seal is attached between fittings
- 3. Ready to use

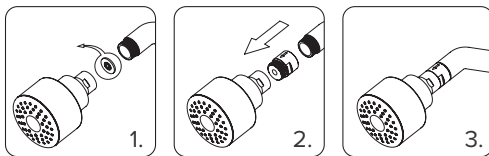
Note: The Oxijet™ is optimised for Felton fixed shower roses. Only use with non-restrictive (all pressures) fixed roses. Compatible with DN15 (1/2") threads and may not be compatible with some fixed roses.

OPERATING PRESSURE  
 Minimum 300 kPa  
 Maximum 1000 kPa  
 OPERATING TEMPERATURE  
 Maximum 80 °C



**OxIJET™ FOR FEMALE FIXED ROSE**  
 TP0115 0800 743 358 | www.oxijet.com

**INSTRUCTIONS**



- 1. Remove any existing flow restrictor
- 2. Install the Oxijet™ and ensure seal is attached between fittings
- 3. Ready to use

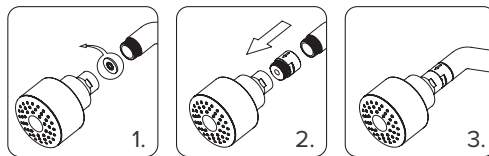
Note: The Oxijet™ is optimised for Felton fixed shower roses. Only use with non-restrictive (all pressures) fixed roses. Compatible with DN15 (1/2") threads and may not be compatible with some fixed roses.

OPERATING PRESSURE  
 Minimum 300 kPa  
 Maximum 1000 kPa  
 OPERATING TEMPERATURE  
 Maximum 80 °C



**OxIJET™ FOR FEMALE FIXED ROSE**  
 TP0115 0800 743 358 | www.oxijet.com

**INSTRUCTIONS**



- 1. Remove any existing flow restrictor
- 2. Install the Oxijet™ and ensure seal is attached between fittings
- 3. Ready to use

Note: The Oxijet™ is optimised for Felton fixed shower roses. Only use with non-restrictive (all pressures) fixed roses. Compatible with DN15 (1/2") threads and may not be compatible with some fixed roses.

OPERATING PRESSURE  
 Minimum 300 kPa  
 Maximum 1000 kPa  
 OPERATING TEMPERATURE  
 Maximum 80 °C

